

Kiwi NORTH EDUCATION 2020

MUSEUM ● KIWI HOUSE ● HERITAGE PARK



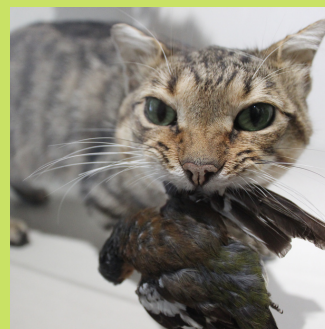
WHANGAREI MUSEUM AND HERITAGE TRUST- KIWI NORTH- IS A REGISTERED CHARITY: CC27239

AT OUR PLACE



WHANGAREI MUSEUM

Local curriculum
NZ History
STEM
Te Ao Māori



KIWI HOUSE

Local conservation projects
Rare, endemic species



HERITAGE PARK

Technologies uncovered
Immersive experiences



MIM RINGER GALLERY

Temporary exhibitions-
Inside Out, Bernina Up Close,
Takahiwi School History

OUR NZ STORY

Our **whare taonga** holds the largest insect collection in the Southern hemisphere, examples of developing technologies, kōrero from the Northern wars, natural history, and ngā taonga Māori o te rohe—local Māori artefacts. Long term and temporary exhibitions.

Northland's only nocturnal **kiwi house** advocating for our native taonga species: kiwi, tuatara and gecko- moko

Heritage Park has a collection of historic buildings demonstrating Northland's early colonial history between the late 1850s to the early 1900s. Our focus is on your experience with our stories.

AT YOUR PLACE



Seaweed: Penguin Party, Seabins, Whale Rescue Protocol

Kiwi: Ambassador of Biodiversity: Everything is connected



Kauri: Ambassador of Biosecurity

Pekapeka/Bats: Aotearoa's Endemic Mammal



Early NZ Encounters: Trade and Technology

Papatūānuku: Northland Rocks, Geology & Forces of Nature



Energy Matters: Exploring energy sources

Building Biology: Sustainability and health in our built environment

Northland / Tai Tokerau Education Focus / Kaupapa Mātauranga

*Learning on the tail of the stingray
Tangohia te korero mātauranga, ka pupuri ai.*